



User Login Details



Welcome to Lord's . . .

The information provided in this booklet will enable you to set-up and connect to the WiFi service provided around the Ground.

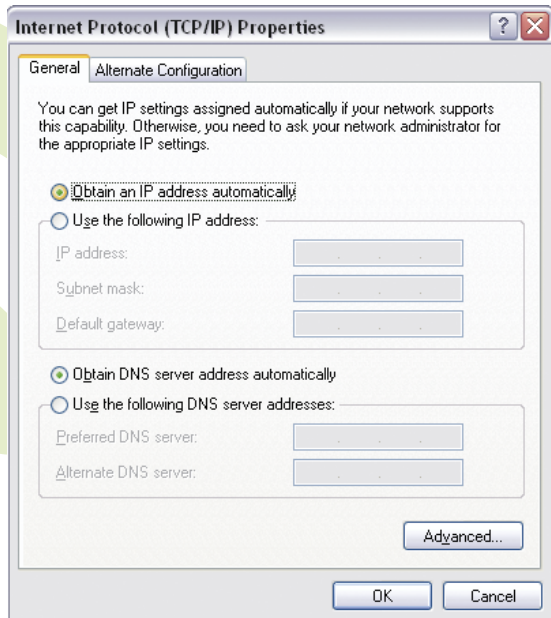
Inside Lord's Ground, there are access points in the Thomas Lord Suite, the Nursery Pavilion, the Indoor School, the Investec Media Centre and various other areas around the Ground - to ensure good coverage of the main buildings, stands and playing area.

You may get a usable signal in other areas but this will depend on the sensitivity of your wireless card. If you move from one access point to another you may need to reconnect as some wireless cards are not stable when "roaming" between access points.

PC connection settings . . .

- 1. Ensure that your wireless network software is configured to obtain a network address and DNS server addresses automatically using DHCP.**

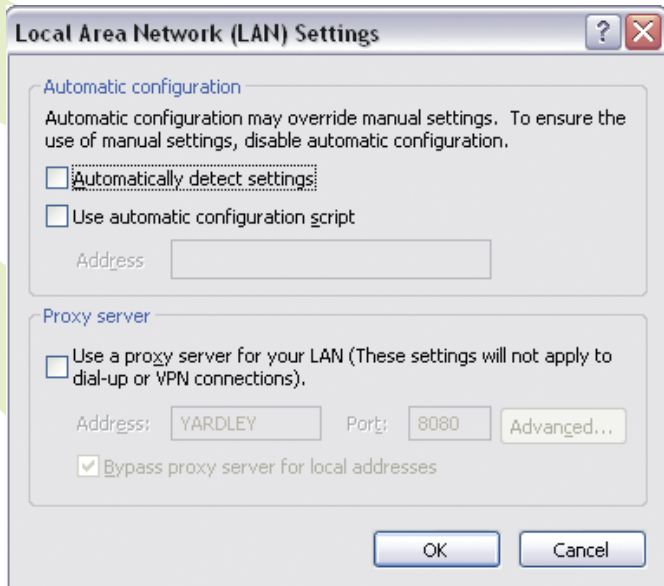
On PCs, open the control panel and select “Network Connections”. Right click the wireless connection and select “Properties”. Select “Internet Protocol” and press “Properties”. Ensure that both “Obtain an IP address automatically” and “Obtain DNS server address automatically” are selected. Press OK twice.



PC connection settings . . .

2. Configure your browser to not use a proxy server.

Using Internet Explorer go to: Tools / Internet Options / Connections / LAN Settings and clear the proxy server tick box.



PC connection settings . . .

- 3.** Use your wireless software to connect to the “Wifi2” network (ignore the “Lord’s network”). Both 802.11b and 802.11g wireless cards can be used.

The precise method for doing this will depend on your PC's software.

- 4.** Use your browser to connect to a website of your choice and you will be prompted to enter your user name and password. Enter these (note that the password is case sensitive) and the website you entered should appear. You will only have to enter your user name and password once in each session (note that sessions will time out if there has been no activity for one hour).

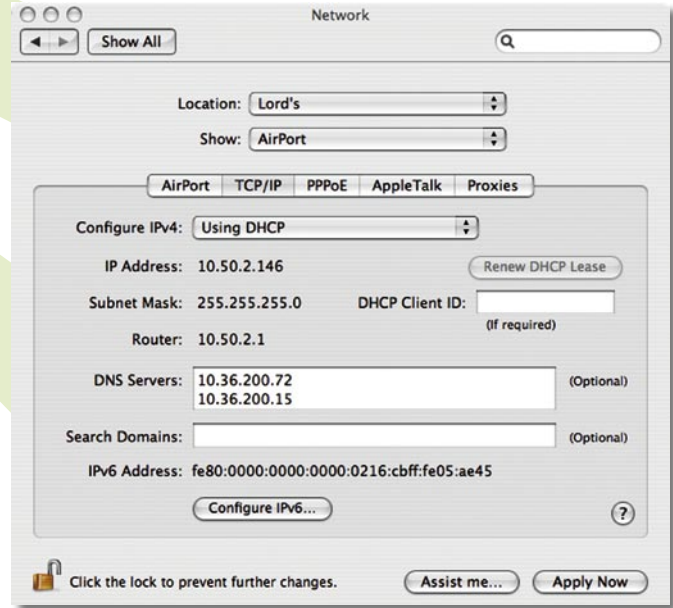
- 5.** Networked applications such as FTP will work only after you have successfully authenticated your username and password using a browser.

- 6.** If you intend using FTP applications, you may want to configure your FTP software to use “Passive FTP Mode” to avoid problems with the firewall.

Mac connection settings . . .

- 1. Ensure that your wireless network software is configured to obtain a network address and DNS server addresses automatically using DHCP.**

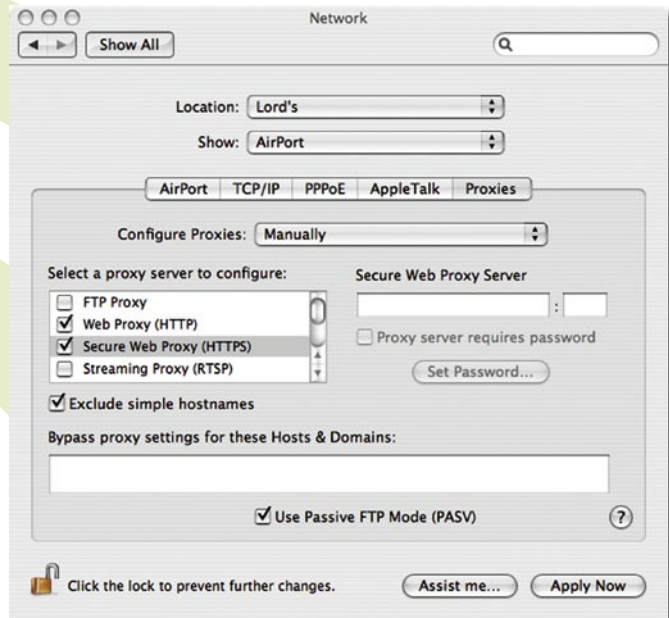
On Apple Macs, select “System Preferences” and double click “Network”. Select the Airport network and ensure that Configure IPV4 is set to “Using DHCP”.



Mac connection settings . . .

2. Configure your browser to not use a proxy server.

On Apple Macs, use System Preferences / Network and then select the Proxies tab and ensure that no proxy servers are configured.



Mac connection settings . . .

3. Use your wireless software to connect to the “Wifi2” network (ignore the “Lord’s network”). Both 802.11b and 802.11g wireless cards can be used.

On Apple Macs use the Airport software to join the Wifi2 network.



4. Use your browser to connect to a website of your choice and you will be prompted to enter your user name and password. Enter these (note that the password is case sensitive) and the website you entered should appear. You will only have to enter your user name and password once in each session (note that sessions will time out if there has been no activity for one hour).
5. Networked applications such as FTP will work only after you have successfully authenticated your username and password using a browser.
6. If you intend using FTP applications, you may want to configure your FTP software to use “Passive FTP Mode” to avoid problems with the firewall.

Terms & Conditions . . .

Marylebone Cricket Club ("MCC") makes available wireless internet access to media representatives and its clients at Lord's Cricket Ground ("Service").

As a user of the Service you accept that:

- 1) the Service may become unavailable at any time, and without notice. If this happens, MCC will endeavour to restore the Service as soon as reasonably possible. MCC cannot be held liable for any such unavailability;
- 2) MCC cannot take any responsibility for your data traversing the Service. MCC cannot guarantee that such data will not become lost, damaged, or intercepted in transit. MCC cannot take responsibility if you lose an email, a download or any other kind of transmission, or if someone gains access to your passwords, or for any other or like circumstances;
- 3) security of your equipment and data is not MCC's responsibility. It is your responsibility to safeguard against the risks of hacking, viruses, eavesdropping and all such other hazards. MCC is not liable for any kind of loss or damage whatsoever;
- 4) the Service must not be used:
 - i. fraudulently or in connection with a criminal offence;
 - ii. to send, receive, upload, download, use or re-use any material which is offensive, abusive, indecent, defamatory, obscene or menacing, in breach of any rights of privacy or otherwise unlawful;
 - iii. to cause annoyance, inconvenience or needless anxiety to any person or organisation;

- iv. to initiate or send advertising or promotional material, including without limitation, junk-mail to any person or organisation; or
 - v. other than in accordance with the acceptable use policies of any connected networks and the Internet Standards.
- 5) All information, whether publicly posted or privately transmitted, is your sole responsibility. This means that you, and not MCC, are entirely responsible for all information that is uploaded, posted, emailed or otherwise transmitted via the Service;
- 6) you must take all necessary steps to ensure that any user name and password issued in connection with the Service is kept confidential, used properly and not disclosed to unauthorised persons. You must notify MCC of any unauthorised use of your password, account or any other breach of security. You are entirely liable for all activities conducted through your account, whether authorised by you or not, until such time as you notify MCC of such unauthorised use and MCC has stopped access to the account;
- 7) if MCC has reason to believe that there has been, or is likely to be, a breach of security or mis-use of the Service, MCC may change your password and notify you accordingly; and
- 8) data transmitted over the Service is not encrypted. You are responsible for ensuring that appropriate techniques are used to ensure the confidentiality of any data transmitted or received using the Service.